

RAYNES PARK COMMUNITY FORUM
30 MARCH 2021

(7.15 pm - 9.15 pm)

PRESENT Councillors Councillor Omar Bush (in the Chair),

1 WELCOME AND INTRODUCTIONS (Agenda Item 1)

The meeting was held via Zoom, and chaired by Councillor Omar Bush with Chris Edge from the Raynes Park Association (RPA). Twenty-two residents and five councillors attended on Zoom with 155 additional views on YouTube. The Chair welcomed everyone to the meeting and explained how the meeting would work.

2 RAILWAY, STATION, STREET MANAGEMENT AND IMPROVEMENTS
(Agenda Item 2)

Chris Larkman gave an update on the 'Kiss and ride' on the south side of the station. Workspace responsible for managing parking and have promised to put up notices. Network Rail (NR) have put fencing in front of Station House and have cleared area to prevent fly-tipping. Chris is meeting with NR in April to review progress. The north side embankment still being considered. Cllr Crowe said he is still chasing is transfer of land on south side to be transferred from NR to Merton Council.

Tony Edwards said that a £1k grant for open space is available with deadline of 12 April so looking to see if any local open space would be viable. Cllr Dean suggested Skew Arch area but Tony said they haven't found sufficient land there. Tony said he will share the criteria. Jane Plant said she will have a look at the criteria but said we need to be sure who the land belongs to and they have agreed to planting as we need to avoid making management of trees more difficult.

3 UPDATE ON COVID VACCINATION PROGRAMME (Agenda Item 3)

Kaz Obuka and Dr Vasa Gnanapragasam from South West London Clinical Commissioning group gave a presentation on the take up of the COVID-19 vaccine in Merton. The presentation is attached to this report.

Kaz said the vaccination programme has been going well with more than 66,000 having received their first dose, all either over 50 or considered clinically vulnerable. They have been reaching out to communities within Merton including 35 online workshops with more than 900 attendees. Dr Gnanapragasam said the focus would be on individuals not just cohorts as COVID somewhere is COVID anywhere and would see more variations.

A resident asked about the Johnson and Johnson vaccine being the best defence against the South African variant. Dr Gnanapragasam said Johnson and Johnson has not yet been approved for use and vaccine distribution is decided nationally. Even with the vaccine rollout it is still vital to maintain social distancing.

Cllr Adam Bush asked about take up of the vaccine amongst BAME communities. Dr Gnanapragasam said there have been some issues and it is vital to address individual concerns. Kaz said the CCG has been holding events in faith centres to reach different communities and more of these venues will be used for vaccination centres.

A resident asked about long waits for blood tests at the Nelson as the environment for waiting is not COVID safe. Dr Gnanapragasam said the service at the Nelson is run by St Georges although samples go to either St Helier or St Georges. They currently do not have an appointment system to be more convenient but this is causing congestion. As a result they are considering introducing a booking system.

Cllr Omar Bush ask if Merton was on track to meet the national schedules. Dr Gnanapragasam said we will be if the public book appointments when eligible and GPs will be chasing unvaccinated to offer reassurance.

A resident asked if a booster will be needed and Dr Gnanapragasam said this is possible in order to adapt to variations but we do not know at this point. A resident also asked about pregnant women being vaccinated and Dr Gnanapragasam said women should speak with their GPs to assess the risk. There is no issue with breast feeding and the vaccine. A resident thanked Dr Gnanapragasam for the commitment of GPs to the vaccination programme.

4 CLIMATE CHANGE ACTION PLAN (Agenda Item 4)

Katie Halter, Climate Change Officer gave a presentation on the Climate Change Action Plan. The presentation is attached to this report. The Climate Change Strategy was adopted in November 2020 and the deliver plan was adopted in February 2021. The Plan covers Merton Council's work to decarbonise and support it can give to others.

There has been a 40% reduction in Merton Council estate emissions since 2009. Merton Council took a number of actions in 2020 including switching to 100% renewable electricity; completing the roll out of LED street lights; spending £0.5m to decarbonise children's centres and community buildings; £400,000 from the Neighbourhood Fund being spent on a Warmer Homes Project; updating the Local Plan and campaigns such as Climate Champions in GP surgeries.

Plans in 2021 include new [community pledges](#), another round of [Solar Together](#), and new [Action Groups](#) to encourage community projects. You can register for [email updates](#) on this work.

A resident asked about Solar panels. Katie said there was not a specific programme in Merton but we support the [Solar Together](#) programme. The round for 2021 has just closed. You could also raise specific ideas for solar energy at the Action Group.

A resident asked about the ecological cost of new car versus emissions from old cars. Katie said ecological can mean a number of different things but there is a reference in the Climate Strategy to a study looks at the embodied carbon not just emissions. Shows impact of production is considerable but this is a high level so it is difficult to be specific on the impact in Merton.

A resident asked about London plan targets and Katie said there are more stringent climate requirements in draft Local Plan being proposed.

A resident said that the following the consultation on emission based parking charges, the decision was to go ahead in spite of opposition. Katie said she was aware of the opposition. The basis of making charges different for different types of activities is well founded.

A resident asked about the impact of the expansion of the Ultra-Low Emission Zone, but Katie said the ULEZ deals with air pollution rather than carbon emissions.

5 2021 CENSUS (Agenda Item 5)

Matthew Hopkins, Census Engagement Manager for the Office of National Statistics (ONS), gave a presentation on the 2021 Census. The presentation is attached to this report. Census day was 21 March 2021 and this is a digital-first census with most households able to complete the form online. For those without digital access they will be able to request a paper copy and ONS field staff will visit households who have not completed their census form and can provide paper copies. Help will also be available online, through a call centre and locally from Merton Voluntary Service Council.

A resident asked about access to Vestry Hall. Matthews said the Support Centre is currently restricted to online & telephone support due to COVID restrictions. They hope to open up for drop in sessions by late April and to coordinate with libraries to use computers there. The support centre can be reached on 020 8685 1771.

6 PLANNING UPDATE (Agenda Item 6)

Neil Milligan, Building and Development Control Manager for Merton Council provided an update on planning issues in Raynes Park.

- 2 Amity Road – demolition of office block to build flats. Likely to go to committee in May
- Bushy Road – prior approval adding two extra floors to a block of flats.
- 14 Worple Road – likely to go to committee
- Manuplastics – two supplementary applications for residential units refused. Appealed against so waiting for the hearing.
- Wyke Road – 8 flats granted at the planning committee. A Section 106 agreement will need to be reached.
- Burlington Road Tesco site – for 300+ units. There was a public enquiry in December and January, now waiting for a decision.
- Medical centre at 15 Amity – pre app for block of flats

Neil also said that the government had introduced new legislation to allow for shelters outside pubs, although this is likely to be a temporary measure. The Government is not extending virtual committees so likely to have to go back in person from May. This is subject to legal action and there might possibly be a hybrid option.

A resident asked about London plan has increased target for units and Neil said the new London Plan has a challenging target for Merton.

A resident asked about the Wyke Road section 106 going ahead despite ownership issues and a Network Rail covenant. Neil explained that planning decisions is not based on ownership issues or Network Rails' view on enforcing the covenant which it would be up to them to do.

A resident asked about the speed limit on Bushy Road changing from 40mph to 20mph.

Neil said there is a programme to reduce across London and Merton, will need to check with colleagues. Cllr Fairclough said Highways had said they expected to add signage. FOLLOWING THE MEETING: the Highways team confirmed that Bushey Road is 30mph between A3 and Grand Drive and then becomes 20mph from Grand Drive toward Kingston Road. Unfortunately until very recently some of the old signs were not removed but I believe that all the correct signage are now in place

A resident asked about the Lesser site on Grand Drive. Neil said there are ongoing discussions, the site was put forward for Local Plan as area for development but has been empty for some years. Cllr Dean said a number of owners had blocked previous attempts to use for sport.

7 ANY OTHER BUSINESS (Agenda Item 7)

Dundonald Church should be completed in June, move in July and opening in September

[Garth Road Centre](#) now back to appointment only.

Hartfield Walk works taking place without permission by Love Wimbledon. Neil said the application is being assessed so can't comment on the merits. Cllr Fairclough has raised questions about use of CIL and the process to date.

FOLLOWING THE MEETING Love Wimbledon has published details of the works on [Hartfield Walk](#) and [frequently asked questions](#). They will also be providing [updates](#).

8 DATE OF NEXT MEETING (Agenda Item 8)

Cllr Bush thanked everyone for attending and closed the meeting

Future meetings:

All at 7.15pm:

- Thursday 10 June 2021
- Thursday 16 September 2021
- Thursday 2 December 2021
- Tuesday 22 March 2022

This page is intentionally left blank

COVID-19 update

Raynes Park Community Forum

Page 1

Barry Causer
Head of Strategic Commissioning (Public Health)

3rd December 2020

Minute Item 3



AIMS AND PURPOSE

- Brief overview of the COVID impact on Merton's communities so far
- Brief overview of outbreak control developments
- Overview of the Tier 2 guidance
- Set out some opportunities for action

Page 2



Weekly key messages

Cases (19th – 25th November):

- 7 day case rate (all ages) was **160.8 cases per 100,000** (down from 185.8 last week).
- 7 day case rate (among 60+) was **113.2 cases per 100,000** (up from 102.1 last week).
- **343** new COVID cases in Merton.

Deaths:

- **1** new registered Merton COVID death (in hospital) for the week ending 6th November.

Testing (pillar 2 only):

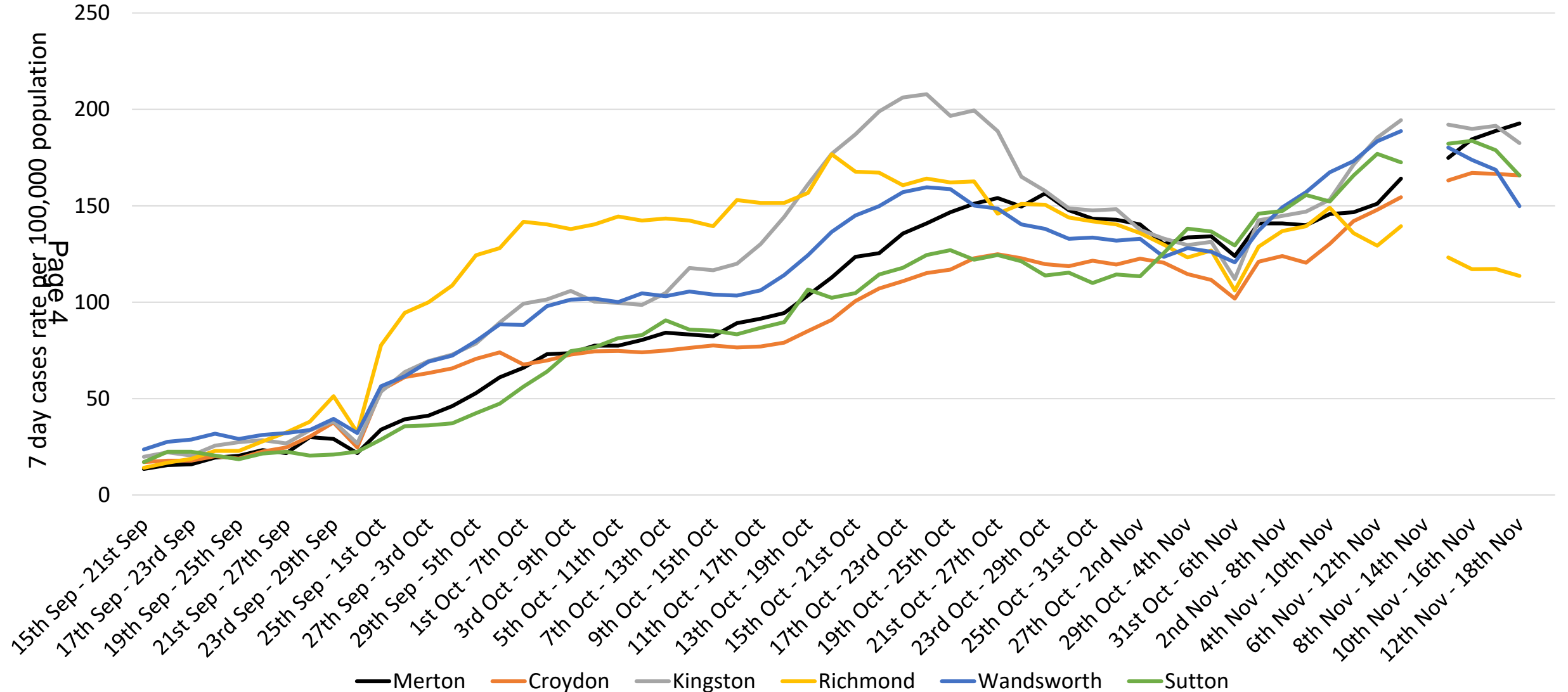
- 7 day testing rate was **218.4 daily tests per 100,000** (up from 215.6 daily tests per 100,000).
- 7 day test positivity decreased to **9.3%** (down from 11.2%).

Rolling 7-day rate of confirmed positive cases per 100,000 population in Merton compared to South West London boroughs (Pillar 1 & 2)

30th November 2020

Source: PHE/PHEC Daily Report

Reporting frequency: Daily



Due to reporting issues no data was available for 8th-14th November

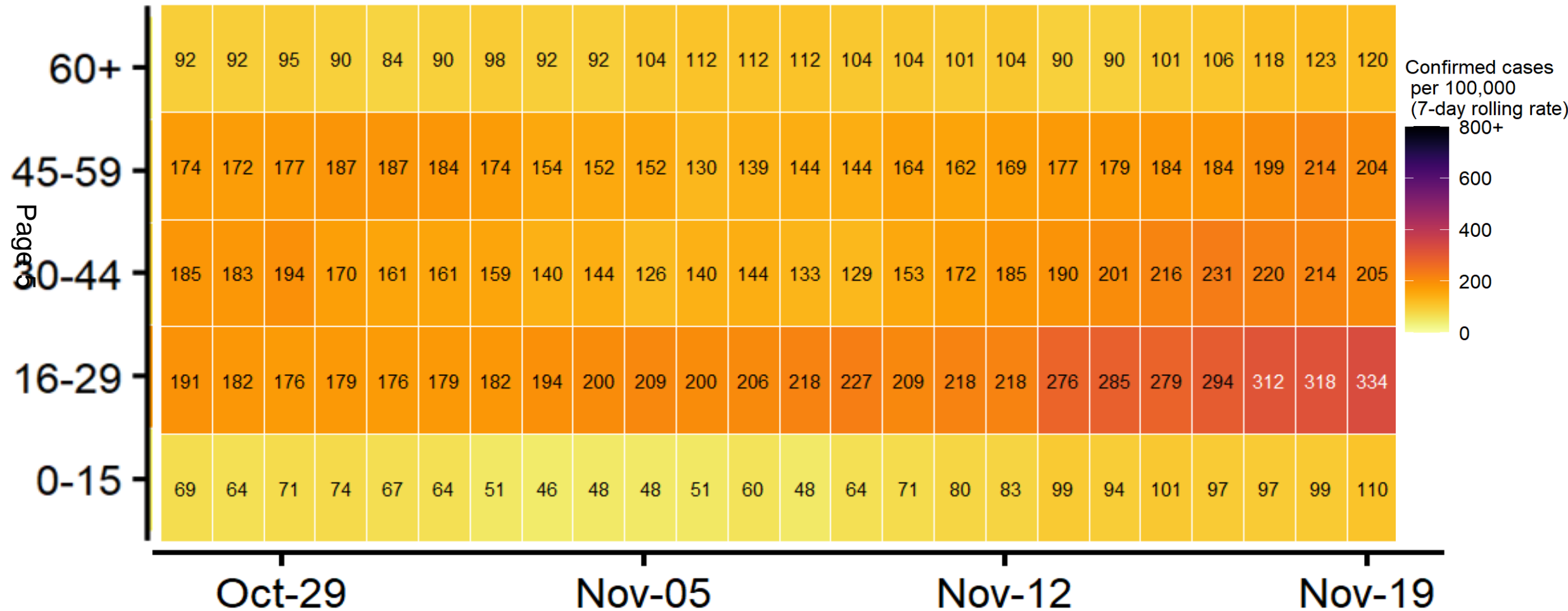
COVID-19 cases rates in Merton by age group heat map over time

7-day rolling total case rates per 100,000

30th November 2020

Source: PHE/PHEC Daily Report

Reporting frequency: Daily



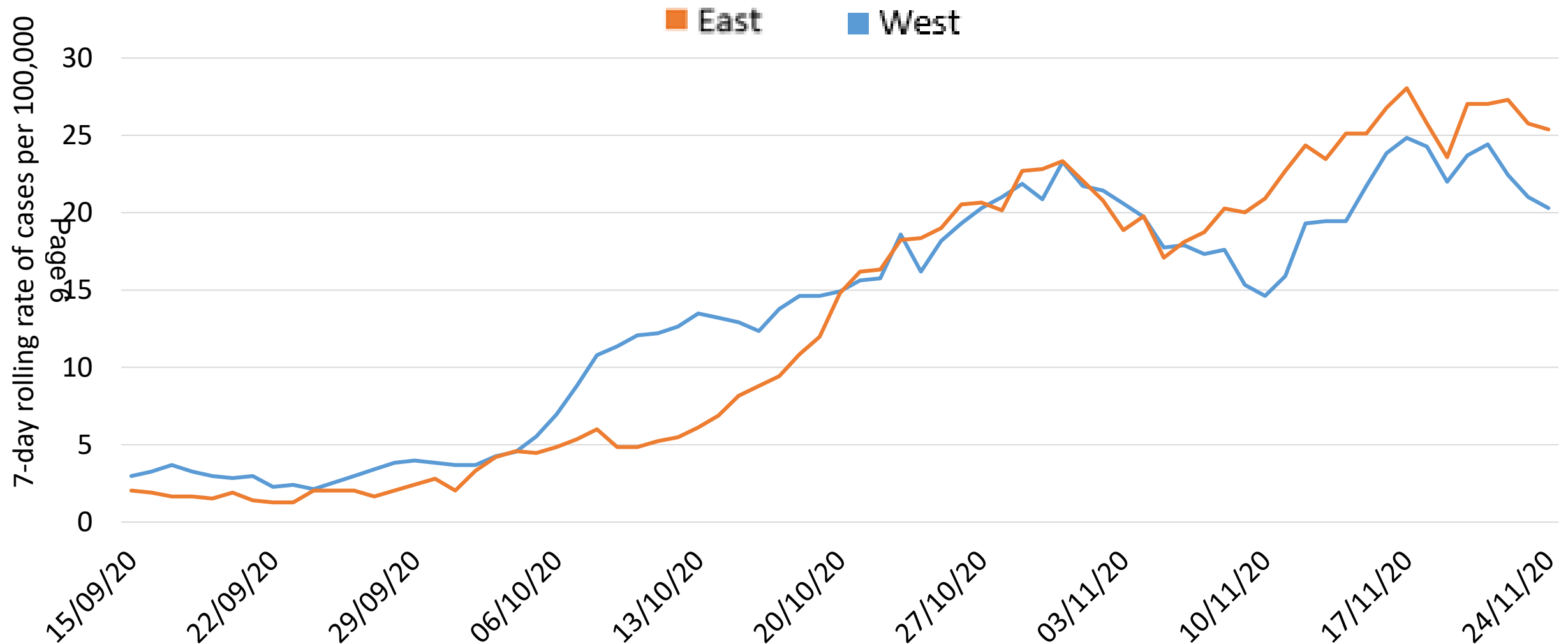
Source: PHE/Merton LA report

COVID-19 case rates in East and West Merton

30th November 2020

Source: LSAT daily line list
Reporting frequency: Daily

7-day rolling total number of cases in East and West Merton

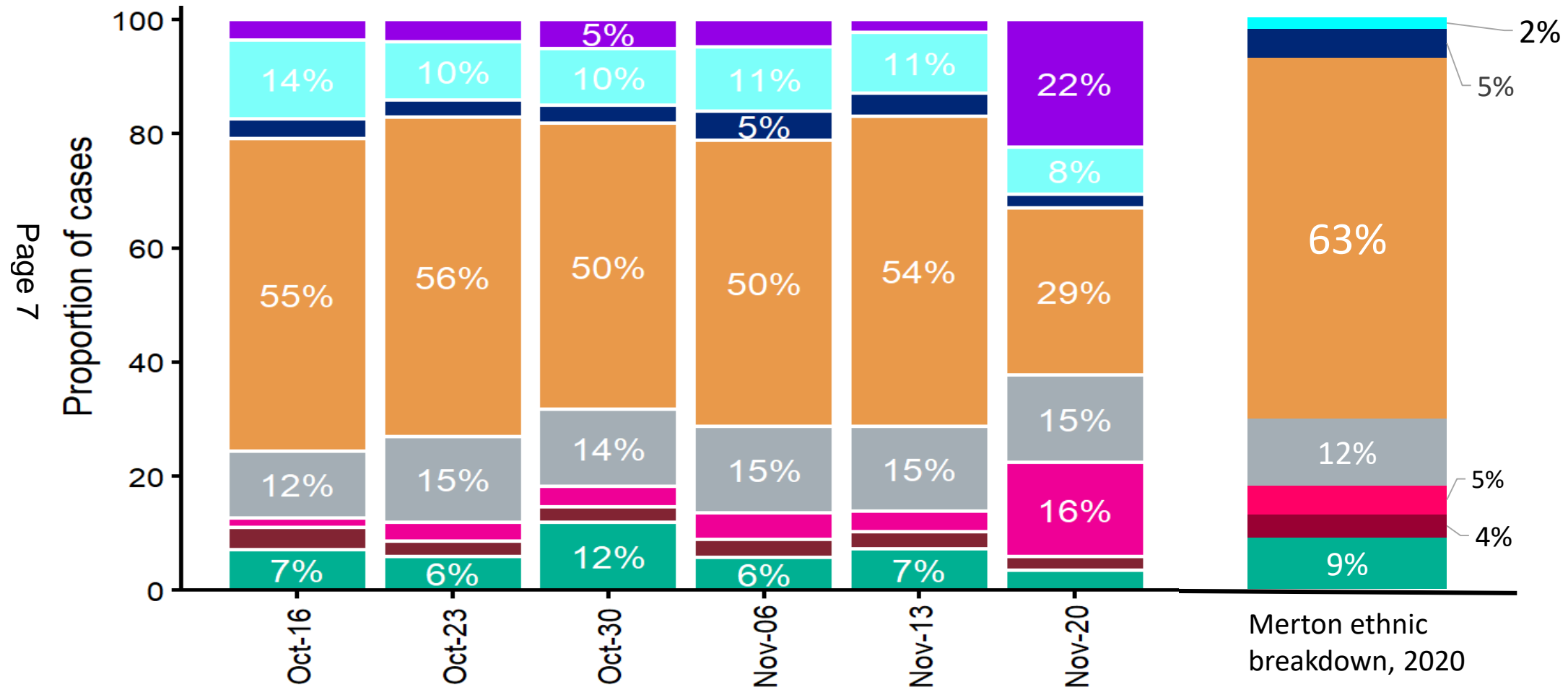


COVID-19 positive cases in Merton by ethnicity

30th November 2020

Weekly distribution of cases by ethnic group in Merton.
Data over 6 weeks and compared to ethnic breakdown Merton.

Source: PHE Merton LA Report



*Please note recent week (ending 20th November) figures are preliminary.
Majority of case data still to be reported

Source: 2016 GLA housing-led population projections

Enquiries Ben.bezuidenhout@merton.gov.uk

Number of deaths registered among Merton residents

30th November 2020

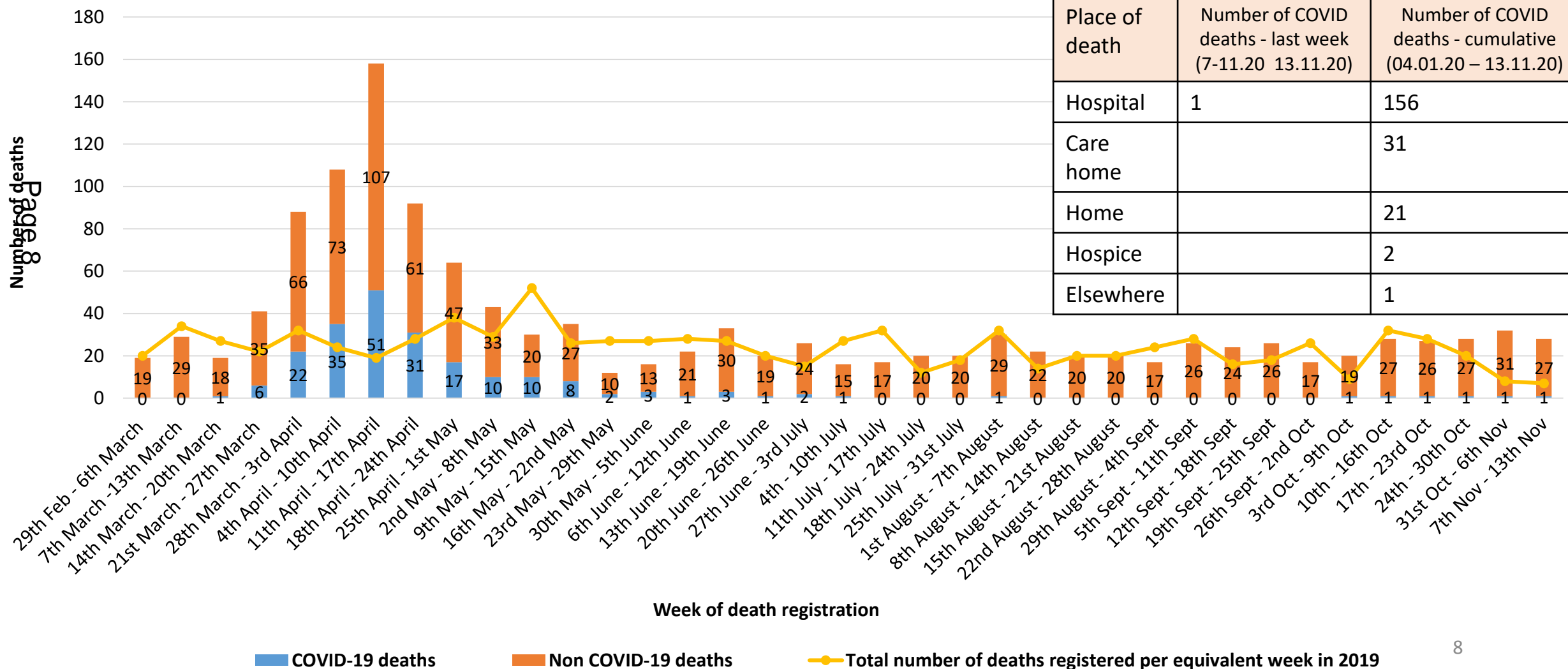
Source: ONS

Reporting frequency: Weekly (most recent 7.11.2020 – 13.11.2020)

Cumulative number of COVID related deaths registered in Merton
(04.01.2020 – 13.11.2020)

211

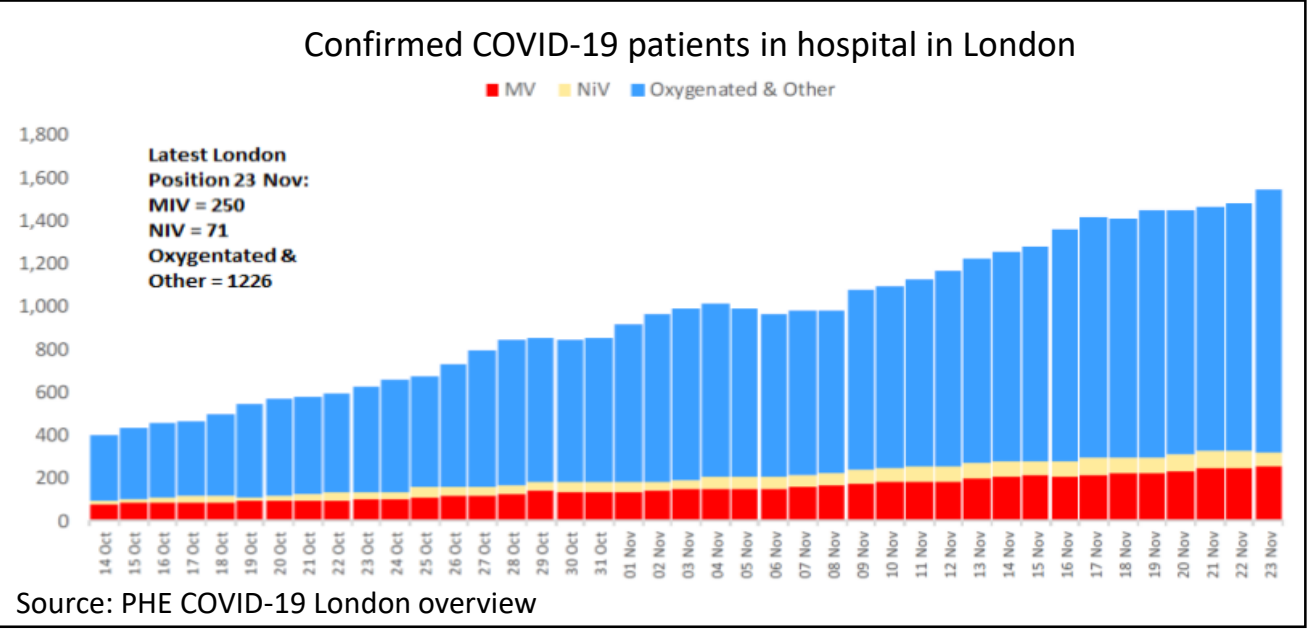
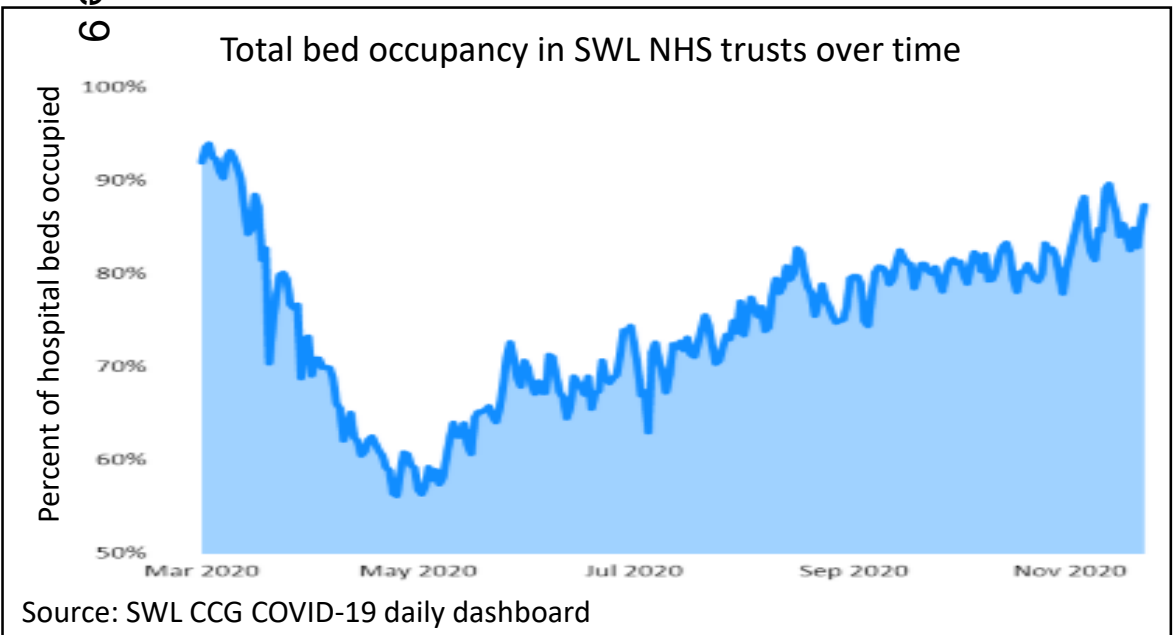
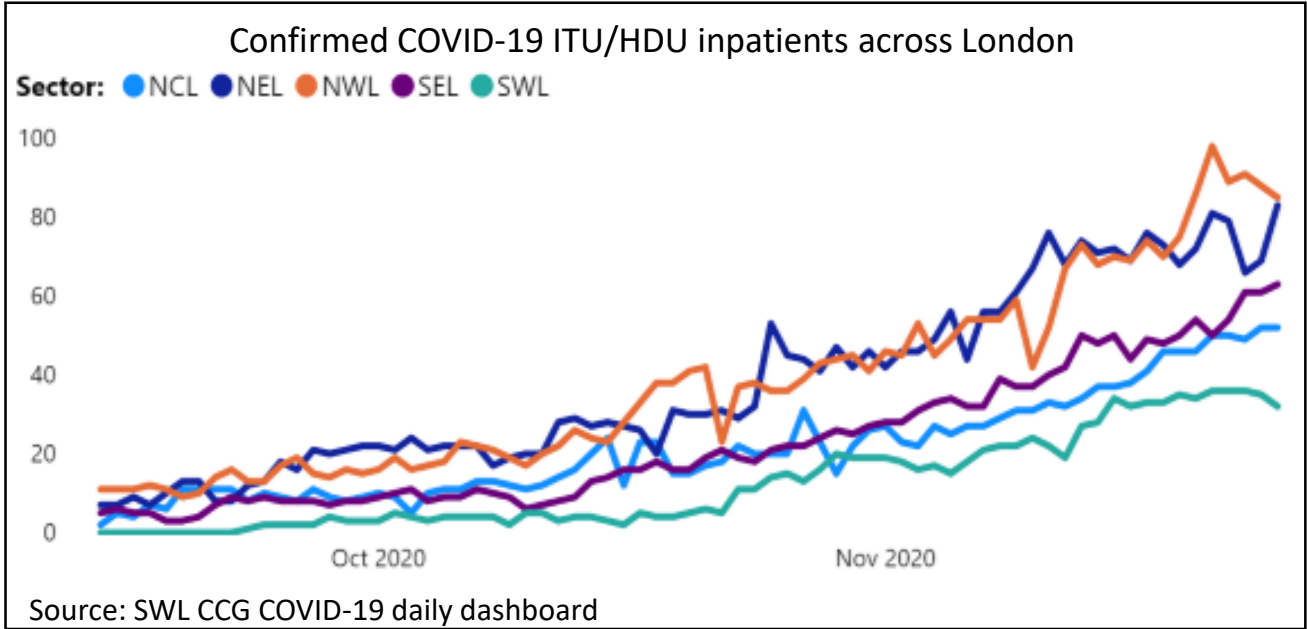
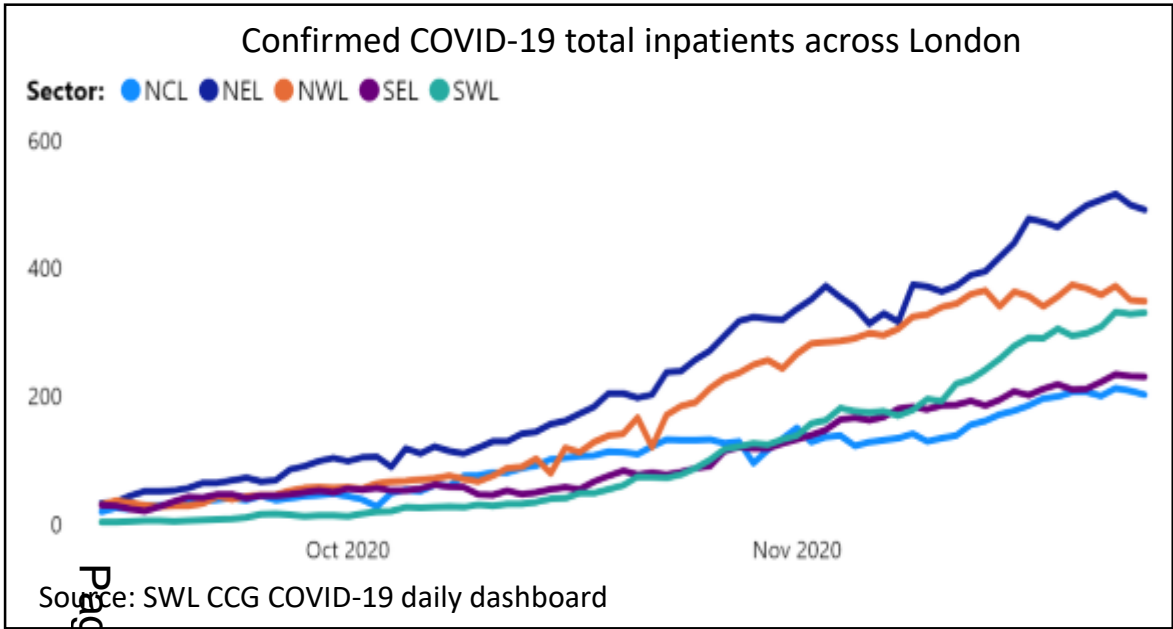
Number of deaths in Merton by week of registration



Place of death	Number of COVID deaths - last week (7-11.20 13.11.20)	Number of COVID deaths - cumulative (04.01.20 – 13.11.20)
Hospital	1	156
Care home		31
Home		21
Hospice		2
Elsewhere		1

COVID-19 and NHS-related indicators

30th November 2020



Page 9

Local contact tracing

- Launched on 18th Nov, in first 3 days – 24 successfully contacted.
- All contacted signposted to local support services

Testing

- Symptomatic:
 - Pillar 1 testing – responsibility of NHS
 - Pillar 2 testing – responsibility of DHSC, local testing sites in collaboration with LA
- Asymptomatic:
 - PCR (polymerise chain reaction) testing for care homes, being rolled out to homecare
 - LFT (lateral flow test) – responsibility devolved to health care providers, universities, future plans for care homes, schools, and LAs
 - Positive results require confirmation with PCR
 - Currently nose/throat but saliva version expected soon

COVID-19 vaccination

- Led by NHS, supported by LA and partners
- Mass testing sites (approx. 1/LA), PCN (Primary Care Network) testing sites for primary care delivery (PCNs can share sites, but expected to be not more than 2-3 per shared site and some have their own site)
- Priority groups – identified by JCVI (national Joint Committee on vaccination and immunisation) based on risk; feasibility also needs to be considered for delivery, ie Pfizer vaccine requires storage -80C. Front line health and care workers are high priority; and then age is used as other main determinant.

TIER 2

HIGH ALERT

FROM 2 DEC

Page 1

MEETING FRIENDS AND FAMILY No mixing of households indoors, apart from support bubbles. Maximum of six outdoors.	BARS, PUBS AND RESTAURANTS Pubs and bars must close, unless operating as restaurants. Hospitality venues can only serve alcohol with substantial meals. Venues must stop taking orders at 10pm and must close by 11pm.	RETAIL Open.	WORK AND BUSINESS Everyone who can work from home should do so.
EDUCATION Early years settings, schools, colleges and universities open. Childcare, other supervised activities for children, and childcare bubbles permitted.	INDOOR LEISURE Open.	ACCOMMODATION Open.	PERSONAL CARE Open.
OVERNIGHT STAYS Permitted with household or support bubble.	WEDDINGS AND FUNERALS 15 guests for weddings, civil partnerships, wedding receptions and wakes; 30 for funerals.	ENTERTAINMENT Open.	PLACES OF WORSHIP Open, but cannot interact with anyone outside household or support bubble.
TRAVELLING Reduce the number of journeys you make and walk or cycle if possible. Avoid busy times and routes on public transport. Avoid car sharing with those outside of your household or support bubble. Avoid entering a Tier 3 area, other than where necessary such as for work or education. Further exemptions apply.	EXERCISE Classes and organised adult sport can take place outdoors, but cannot take place indoors if there is any interaction between people from different households. Organised activities for elite athletes, under-18s and disabled people can continue.	RESIDENTIAL CARE COVID-secure arrangements such as substantial screens, visiting pods, and window visits. Outdoor/airtight visits only (rollout of rapid testing will enable indoor visits including contact).	LARGE EVENTS Sport, live performances and business meetings limited to 50% capacity or 2000 people outdoors (whichever is lower) and 50% capacity or 1000 people indoors (whichever is lower)

MEETING FRIENDS AND FAMILY No mixing of households indoors, apart from support bubbles. Maximum of six outdoors.	BARS, PUBS AND RESTAURANTS Pubs and bars must close, unless operating as restaurants. Hospitality venues can only serve alcohol with substantial meals. Venues must stop taking orders at 10pm and must close by 11pm.	RETAIL Open.	WORK AND BUSINESS Everyone who can work from home should do so.
EDUCATION Early years settings, schools, colleges and universities open. Childcare, other supervised activities for children, and childcare bubbles permitted.	INDOOR LEISURE Open.	ACCOMMODATION Open.	PERSONAL CARE Open.
OVERNIGHT STAYS Permitted with household or support bubble.	WEDDINGS AND FUNERALS 15 guests for weddings, civil partnerships, wedding receptions and wakes; 30 for funerals.	ENTERTAINMENT Open.	PLACES OF WORSHIP Open, but cannot interact with anyone outside household or support bubble.
TRAVELLING Reduce the number of journeys you make and walk or cycle if possible. Avoid busy times and routes on public transport. Avoid car sharing with those outside of your household or support bubble. Avoid entering a Tier 3 area, other than where necessary such as for work or education. Further exemptions apply.	EXERCISE Classes and organised adult sport can take place outdoors, but cannot take place indoors if there is any interaction between people from different households. Organised activities for elite athletes, under-18s and disabled people can continue.	RESIDENTIAL CARE COVID-secure arrangements such as substantial screens, visiting pods, and window visits. Outdoor/airtight visits only (rollout of rapid testing will enable indoor visits including contact).	LARGE EVENTS Sport, live performances and business meetings limited to 50% capacity or 2000 people outdoors (whichever is lower) and 50% capacity or 1000 people indoors (whichever is lower)

TIER 2 RESTRICTIONS

As of 00.01 Wednesday 2nd December the local restriction tier system applies to England

What does this mean?

London and Merton has been placed in **Tier 2: High Alert**. This is for areas with a higher or rapidly rising level of infections, where some additional restrictions need to be in place.

- ✓ you must not socialise with anyone you do not live with or who is not in your support bubble in any indoor setting, whether at home or in a public place
- ✓ you must not socialise in a group of more than 6 people outside, including in a garden or a public space – this is called the ‘rule of 6’
- ✓ pubs and bars must close, unless operating as restaurants. Hospitality venues can only serve alcohol with substantial meals
- ✓ places of worship remain open but you must not socialise with people from outside of your household or support bubble while you are indoors there
- ✓ organised outdoor sport, and physical activity and exercise classes can continue
- ✓ you can continue to travel to venues or amenities which are open, but should aim to reduce the number of journeys you make where possible

WHAT HAS NOT CHANGED?

Hands, Face, Space.

- ✓ Washing your hands with soap and water, or using hand sanitiser, regularly throughout the day will reduce the risk of catching or passing it on.
 - ✓ You must [wear a face covering](#) in most indoor public settings, unless you have an exemption
 - ✓ Social Distancing: Stay 2 meters apart from those who you do not live with or who are not in your support bubble.
- ✓ Where you cannot stay 2 metres apart you should stay more than 1 metre apart, and take additional steps to stay safe. For example:
- Wear a face covering: on public transport and in many indoor spaces, you must wear a face covering by law, unless you are exempt
 - move outdoors, where it is safer and there is more space
 - if indoors, make sure rooms are well ventilated by keeping windows and doors open

Page 13



OPPORTUNITIES FOR ACTION

- Join our network of over **115** COVID-19 Community Champions; a key part of our approach to preventing and managing outbreaks in Merton.
- Drop-in sessions take place every Wednesday (12pm-1pm and 7pm-8pm) - last weeks topic was 'winter wellness' and this week we are exploring the 'tier 2 restrictions'.

Page 14

Sign up for our 'Celebrating Safely' workshops on Monday 14th December 2020 (12 noon to 1pm and 6pm to 7pm) – to hear practical tips on reducing the risk of COVID-19 during the holiday season.

- Sign up for Merton COVID-19 newsletter – www.merton.gov.uk/newsletter
- For more information contact public.health@merton.gov.uk



ANY QUESTIONS?



This page is intentionally left blank

Merton Climate Change Update

Katie Halter,
Climate Change Officer
March 2020



A framework to meet net-zero targets....

Since the Declaration of a climate emergency, we have developed a sound strategic approach and a framework for delivery.

Passed
Merton's **Climate Strategy and Action Plan** was adopted in November 2020.

Climate Delivery Plan – Year 1
adopted in January 2021



Merton Climate Action Plan

19% of borough emissions

Transport

What you can do:

- Reduce car use in favour of walking and cycling
- Switch to ultra-low emission vehicles such as electric
- Schools and businesses adopt travel plans
- Avoid flying

What the Council will do:

- Support new cycle paths and wider pavements
- Work with TfL for faster transport decarbonisation and vehicle share schemes
- Consult on emission-based parking charges

81% of borough emissions

Buildings & Energy

What the Council will do:

- Require new buildings to be low carbon and resilient to the impacts of climate change
- Lobby for tighter regulations and further funding for low carbon buildings

What you can do:

- Save energy by switching off appliances and turning down the heating
- Use green electricity
- Avoid gas by buying a low carbon heating system (e.g. a heat pump)
- Invest in insulation and renewable energy

-0.1% of borough emissions

Green spaces

What you can do:

- Grow vegetation around your home
- Remove paving from your front garden to plant trees
- Join or sponsor a community planting group

What the Council will do:

- Maintain existing green spaces and plant more trees

Major contributor of emissions

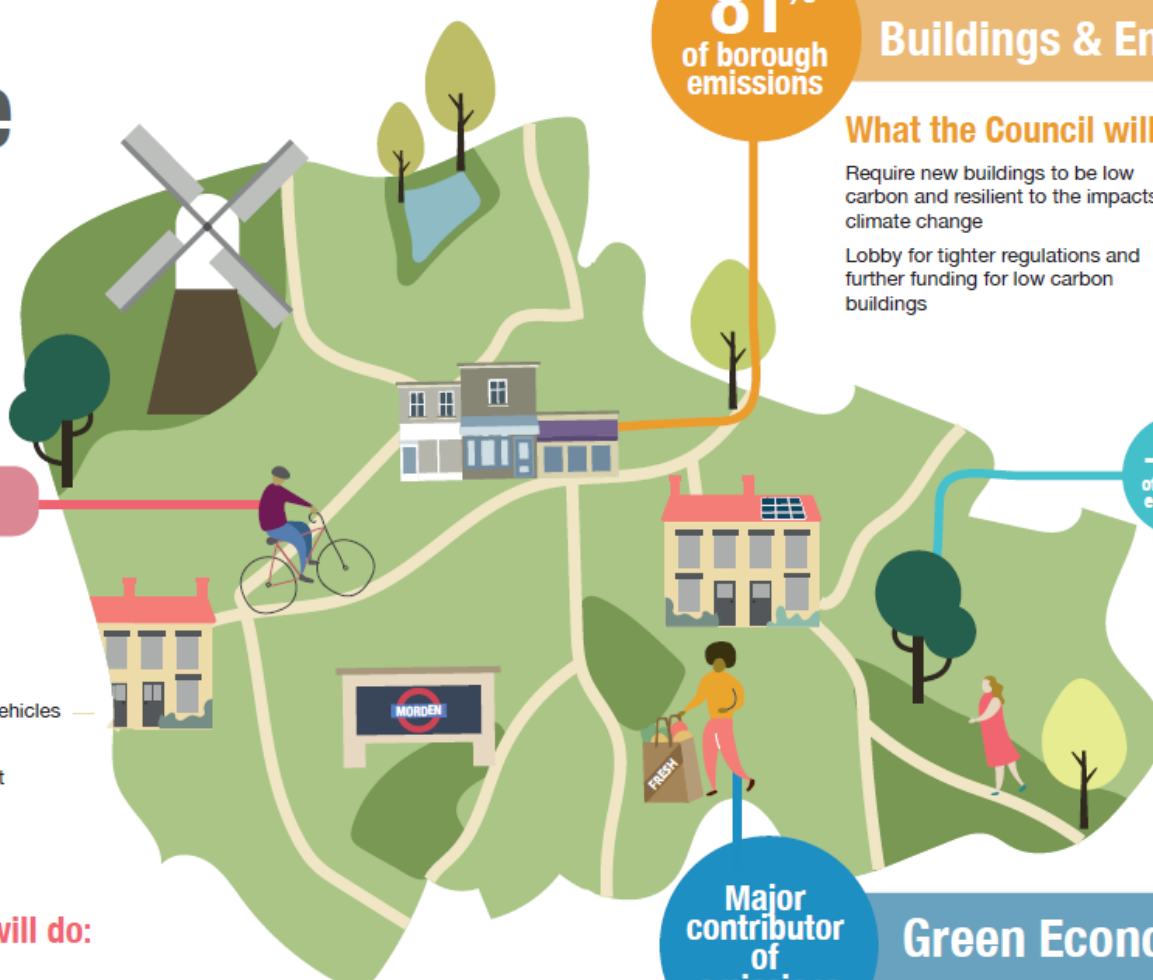
Green Economy

What the Council will do:

- Encourage waste reduction
- Help build low carbon skills
- Encourage green businesses

What you can do:

- Buy green and local products
- Eat less meat, fish and dairy
- Reuse items and buy products with less packaging



Actions in 2020

We continued to reduce emissions from the Council's estate.

Shift to 100% **renewable electricity.**

Completed LED **streetlight programme.**

Bid for £0.5 M grant to **decarbonise children's centres** and community buildings.



Actions in 2020

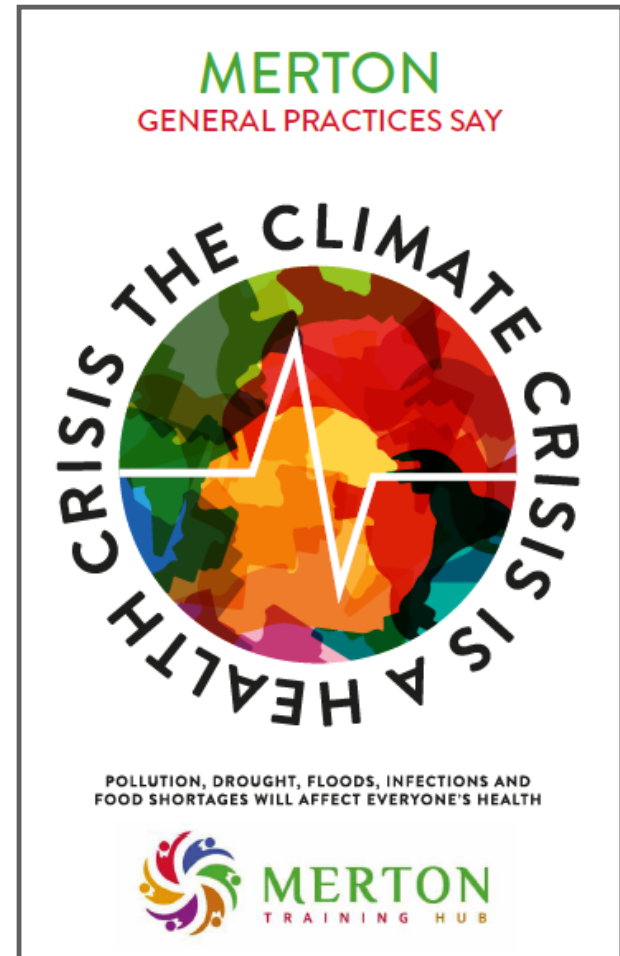
We continued to support emissions reductions within the borough

£400,000 of **Neighbourhood Fund** allocated to climate reduction projects

More funding for **Warmer Homes** Project

Draft **Local Plan** policies consistent with Climate targets

Campaigns to support change, such as Climate Champions in GP practices.



Coming up in 2021

Register for new **email updates**

Google “Merton climate emergency”

Sign up to receive future updates on
Merton's Climate Strategy and Action Plan

Make a climate change pledge

Pledge to make Merton a net-zero carbon borough by 2050.

Make your climate change pledge

Make a **pledge**

Google “Merton climate pledge”

The Big Pedal – register your school!

www.bigpedal.org.uk



Join the **Climate Action Group**

Google “Merton climate action group”

How the Climate Action Group will work

Page 23

Want to take action?
Have an idea?

Come to a meeting

Build a carbon reduction project



Climate Action Group Structure

Co-Chairs

Ramya Venkataraman: cag.engagement@gmail.com
Cllr Martin Whelton: Martin.Whelton@merton.gov.uk

Page 24

Engagement and Funding

Ramya Venkataraman: cag.engagement@gmail.com

Green Economy

Diana Sterck
Carola Grillo
cag.greenconomy@gmail.com

Buildings and Energy

Katie Halter
cag.buildings@gmail.com

Transport

Luke McCarthy
Mehmood
Naqshbandi
Transport.CAG.Merton@gmail.com

Greening Merton

Kelly Gunnell
cag.greeningmerton@gmail.com

Group Support

Dominique Hill: Dominique.Hill@merton.gov.uk
Katie Halter: Katie.Halter@merton.gov.uk

Next Steps

Meeting dates

Wednesday 31st March – Greening Merton

Wednesday 28th April – Building & Energy

Wednesday 26th May – Transport

Wednesday 30th June – Progress Meeting

Keep in touch

- Check the Climate Action Group website or sign up for climate updates
- Contact a community lead or climate change officer

End



census
2021

Helping everyone take part in Census 2021

Matthew Hopkins
ONS Census Engagement Manager, Merton

The census

- The census is a survey that happens every 10 years and everyone takes part.
- The ONS is responsible for the census in England and Wales.
- The census is important because it gives the most detailed information we have about our society.



Billions of pounds are allocated to local services using census-based information every year

Page 29 So that these funds can be allocated in the most appropriate and effective ways, it's important the census accurately captures everyone in our society.

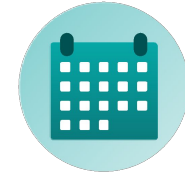


No one knows your community better than you

- By taking part and encouraging others to do the same, you'll help make sure your community is counted in decisions on services and funding.
- We understand that building positive relationships with communities means more people understand the benefits of the census and are likely to take part.
- We need your help to raise awareness and understanding of the census in your community.

Census 2021 facts

- The next census will take place on **Sunday 21 March 2021.**
- For the first time this will be a **digital-first** census, but paper will be available for those who need it.
- We'll focus on engaging with everyone, including under-represented and **hard to reach groups.**
- Help will be available for people who need support to take part online.



Keeping personal information safe

- Before publishing statistics, the ONS make sure that they don't include any personal information.
- The information collected in the census remains anonymous for 100 years.
- No individual or their responses can be identified in the statistics the ONS publish.
- Everyone must complete the census. Legislation made the modern census a legal obligation in 1920.



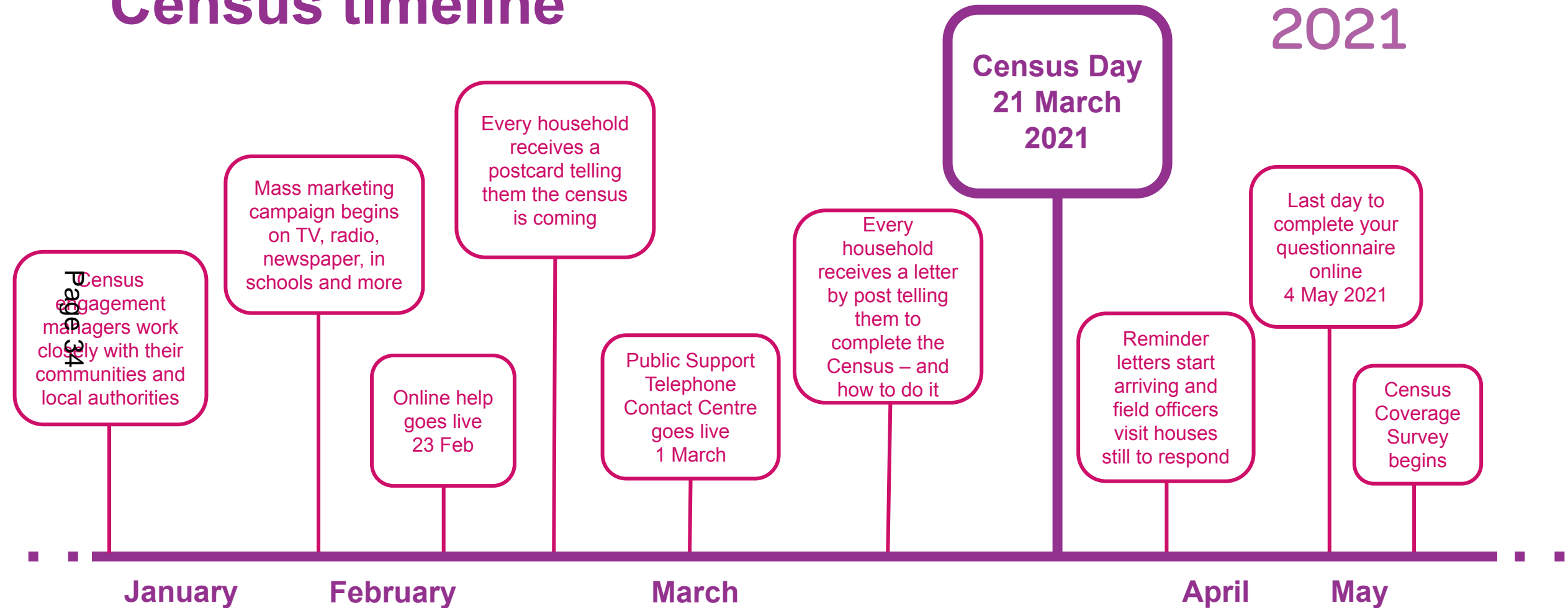
Keeping personal information safe

- Personal census information can't be used to change any service an individual gets, and it can't be seen by anyone who makes decisions about them.
- For example, it cannot be seen or used by government to influence benefit claims, a residency application, immigration status or taxes, or by landlords or any other private organisation



Census timeline

census
2021



Advanced Postcard

census
2021

Page 35

Sent to every household - mid to end of **February**

Inform people that the census is coming.

Calls upon recipients to look out for their census invitation pack in the post.



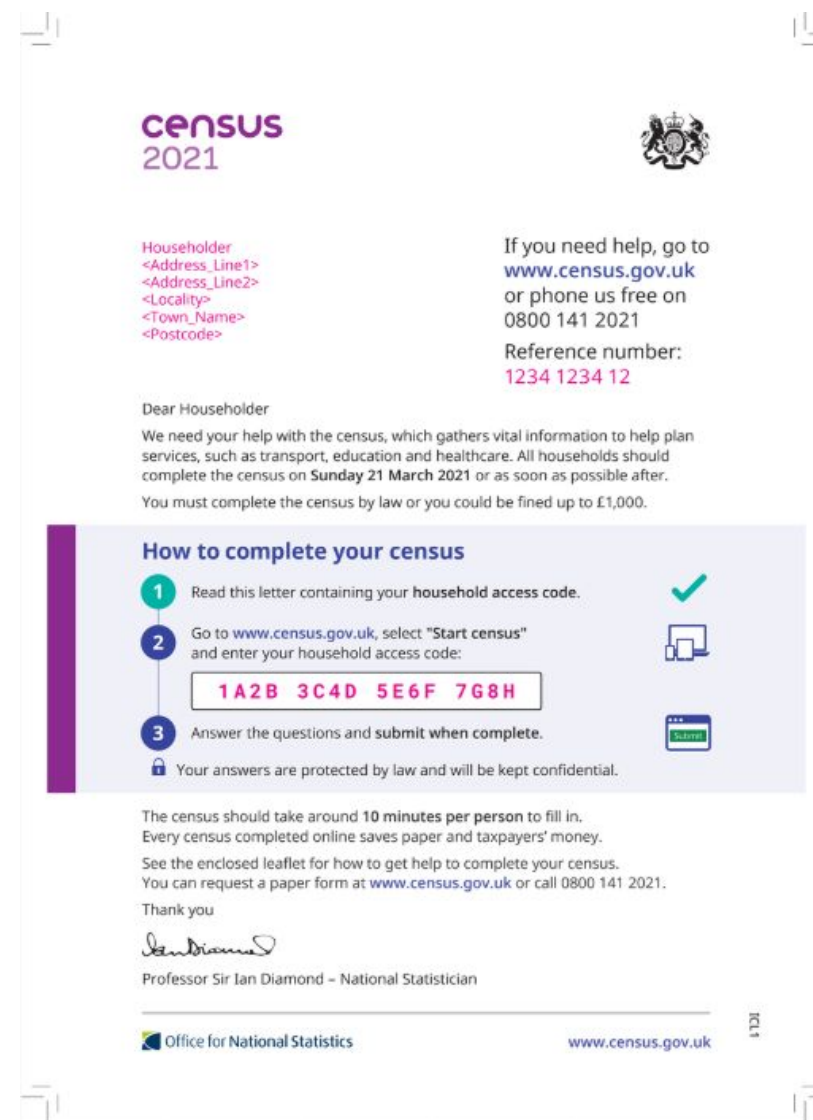
Initial Contact Packs - Letter

Page 36

Sent to households **beginning of March**

Provide households with their access code for the electronic questionnaire.

Provide help options - including where to request a paper questionnaire.



Initial Contact Packs - Information

census
2021

Page 37

Included with the letter

Provide households with answers to common questions about the census and how to complete the form.

Communicate different methods of contact for getting help.



What the census is

The census is a survey that happens every 10 years and gives us a picture of all the people and households in England and Wales.

Why you have to take part

Organisations such as local authorities and charities use census information to understand the services we all need, including transport, education and healthcare.

You must complete the census by law. If you do not, or if you supply false information, you could be fined up to £1,000.

Some questions are clearly labelled as being voluntary. It is not an offence if you do not answer these.

When to complete your census form

You should complete your census form on Sunday 21 March 2021 or as soon as possible after.

You can submit your completed questionnaire before 21 March if you know who will be in your household on that day. If you submit your questionnaire before 21 March but your circumstances change before that day, you can let us know.

Who should fill it in

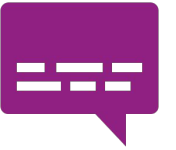
The householder should fill in the census for the household. This is the person who owns or rents (or jointly owns or rents) the property, or the person who is responsible (or jointly responsible) for paying household bills and expenses.

Answering separately from your household

If you want to answer separately from the people you live with, you can contact us to request an individual access code. Someone must still complete a census for your household.

Making it accessible for all

- Large print format
- Braille format
- Accessible videos with BSL, audio & subtitles
- Easy Read leaflet
- Text Relay
- Compatible electronic questionnaire
- Online guidance
- Translation booklets of the questionnaire
- Language support line



Online & Language support

Dedicated Contact Centre

- People will be able complete the census over the phone with help from trained staff via free phone.
- Guidance and translation service in many languages.
- Request a paper version of the questionnaire.
- Accessible census guidance, for example, in braille



Language support

Translated versions of a number of engagement communications in 49 languages e.g.

Languages		
Arabic	Czech	Hebrew
French	Hungarian	Urdu
Bengali	Bulgarian	Somali
Mandarin	Polish	Spanish
Cantonese	Romanes	Portuguese
Cornish	Punjabi	Kurdish
Romanian	Gujrati	Tamil
Lithuanian	Hindi	Vietnamese
Latvian	Nepali	Turkish
Slovak	Yiddish	Additional languages available

What you can do

- Support people to fill in their questionnaire
- Direct people to the telephone and language support
- Help to promote the message that personal census information is kept safe and secure
- Post news items or articles if you are able to communicate online with your community

Keep in touch

Census Engagement Managers for Merton:

matthew.hopkins05@field.census.gov.uk
+44 (0)7452 945152

- Bookmark the Census 2021 website: www.census.gov.uk
- Follow us on social Media [#Census2021](https://twitter.com/Census2021)

